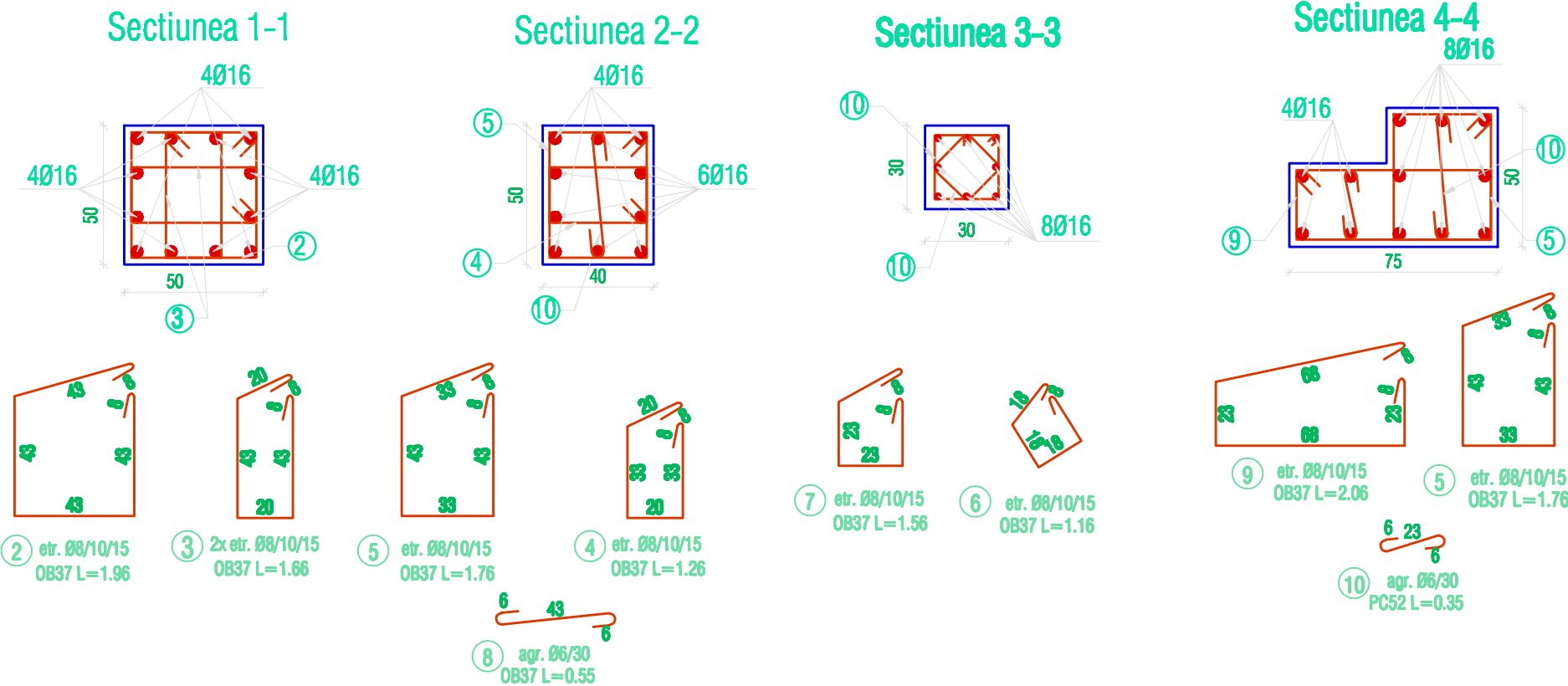



DETALII STALPI
Scara 1:20



MATERIALE FOLOSITE	
beton cuzineti	C16/20
beton suprapstructura	C20/25
mortar zidarie	M50Z
armatura etrieri	ØB37
armatura longitudinala	PC52
DATE GENERALE	
localitate	Bucuresti, sector 1, str. Viteaz, nr.16
sector / judet	1
clasa de importanta	II
categ. de importanta	C
zona seismica	C
$a_g=0.24g$; $T_s=1.6s$	
zona de zapada	C
presiunea conventionala	350kPa
adancimea de fundare	2.00m

PROIECT		REABILITARE, CONSOLIDARE SI EXTINDERE GRADINITA NR.285 -CORP 1																	
ADRESA		STR. WITTING, NR.15, SECT. 1, BUCURESTI		INDEX		MODIFICARI				DATA									
		SC M.C. General Construct SRL		PROIECTANT GENERAL															
		Str. Teodor Stefanescu 4 Sector 3 Bucuresti		S.C. M.C. GENERAL CONSTRUCT S.R.L.															
		CUI RO16767211 RC J40/12061/2003		BENEFICIAR		GRADINITA NR. 285 -CORP 1		PROIECT NR. J12 - 2008		SCARA 1:20									
		Telefon/Fax : (+4) 021 310 60 63 E-mail : mc@mcproiect.ro		PLANSA		PLAN DETALII ARMARE STALPI DEMISOL		PLANSA NR. R - 04		DATA 05 - 2008									
		www.mcgeneralconstruct.ro		PROIECTAT		SPECIALITATE		LOCATIE		INDEX		NUMAR PR. INT.		FAZA					
COORDONARE PROIECT REZISTENTA		REZISTENTA		SEF PROIECT:		Ing. Marian GERMOVICH		MCOC		REZISTENTA		2008 - J12		60		J - 12		D.E.	
				PROIECTAT:		DnI. Ing. Catalin HOMES													
				DESEINAT:		DnI. Ing. Catalin HOMES													